

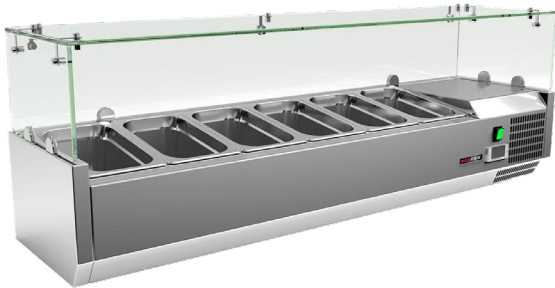
# Technical data sheet



## Product features

### Cooling display 6 x GN 1/4

<b>Model</b>	<b>SAP Code</b>	00013357
--------------	-----------------	----------



- Material: Stainless steel
- GN / EN size in device: GN 1/4
- Number of GN / EN: 6
- Control type: Digital
- Minimum device temperature [°C]: 2
- Maximum device temperature [°C]: 8
- Unit: Right
- Automatic defrost: Yes

<b>SAP Code</b>	00013357	<b>Number of GN / EN</b>	6
<b>Net Width [mm]</b>	1400	<b>GN / EN size in device</b>	GN 1/4
<b>Net Depth [mm]</b>	335	<b>GN device depth</b>	150
<b>Net Height [mm]</b>	440	<b>Minimum device temperature [°C]</b>	2
<b>Net Weight [kg]</b>	43.00	<b>Maximum device temperature [°C]</b>	8
<b>Power electric [kW]</b>	0.125	<b>Refrigerant</b>	R290
<b>Loading</b>	230 V / 1N - 50 Hz	<b>Refrigerant weight [g]</b>	33.00

# Technical data sheet



## Technical parameters

### Cooling display 6 x GN 1/4

**Model**

**SAP Code**

00013357

**1. SAP Code:**

00013357

**2. Net Width [mm]:**

1400

**3. Net Depth [mm]:**

335

**4. Net Height [mm]:**

440

**5. Net Weight [kg]:**

43.00

**6. Gross Width [mm]:**

1490

**7. Gross depth [mm]:**

375

**8. Gross Height [mm]:**

310

**9. Gross Weight [kg]:**

53.00

**10. Device type:**

Electric unit

**11. Power electric [kW]:**

0.125

**12. Loading:**

230 V / 1N - 50 Hz

**13. Refrigerant:**

R290

**14. Material:**

Stainless steel

**15. Device properties 2:**

Cooling

**16. GN / EN size in device:**

GN 1/4

**17. Number of internal parts:**

6

**18. Number of GN / EN:**

6

**19. GN device depth:**

150

**20. Pizza design:**

Yes

**21. Unit:**

Right

**22. Control type:**

Digital

**23. Minimum device temperature [°C]:**

2

**24. Maximum device temperature [°C]:**

8

**25. Automatic defrost:**

Yes

**26. Refrigerant weight [g]:**

33.00